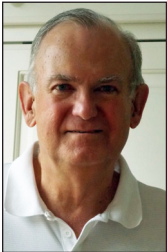


TABBY TATTLER

Dataaw Historic Foundation Newsletter

www.DataawHistory.org

Spring 2013



From the President . . . JOHN COLGAN

Spring is a time of renewal and so it is at Dataaw Historic Foundation. We have made some important changes. We said farewell to Doug Campbell, Treasurer; Patty Gesell, Membership Chair; Marcia Rohrbaugh, Fund Raising Chair; and Jane Griffith, History Chair. Each of these people has advanced the cause of historic preservation here on Dataaw and we are very grateful to each of them for their service.

Filling their shoes this year are Ken Hirsch, Treasurer; Joe Roney, Assistant Treasurer; Susan Converse and Paula Campbell, Membership Co-Chairs; Dawn Schuster and Diane Roney, Fund-raising Co-Chairs; and Joel Holden, History Chair. They are already hard at work!

Please join me in welcoming four new Directors-at-Large: Joan Berra who joins us as Director of Volunteers, a new position; Ron Jacobs who will serve on our Long Range Planning Committee; Joe Roney our new Assistant Treasurer; and Ann Craigmile, Executive Editor of the Tabby Tattler.

For the 15th consecutive year, the DHF Oyster Roast, our major fund-raising event, was another great success! Although rain threatened earlier in the day, the evening turned out mild and dry. A lot of people worked hard to make this look easy. Thanks go to the nearly 35 volunteers led by Dawn Schuster and Diane Roney. Music by our own Dick Nalwasky and his "Sometimes Later" band and the chance to win some fabulous raffle prizes kept everyone smiling despite the perennial no-see-ums!

Preservation work continues in the Sams Plantation Tabby Complex. The back wall of the Blade House and Barn will be stabilized with several feet of sand placed at the lower interior wall of the building to provide the needed support. There is an interesting new project involving the Kitchen Fireplace area. Archaeological investigations will be made to determine if there was an indigo processing vat at the rear of the fireplace and to discover if the fireplace predates the center section of the main house.

There has been an exciting new find of Thom's Creek punctated pottery sherds on Reeve Court. Dating from 1500 B.C. to 800 B.C., these rare artifacts attest to the fact that Dataaw Island has been a popular place to live for eons! It also serves to help us understand more about ourselves if we know more about who the people were who came before us, where they came from, and how they lived. This is a major goal of the Dataaw Historic Foundation.

Membership renewals are running ahead of last year and more of you have increased your level of giving. This is very good news for the future of preservation on Dataaw Island. We greatly appreciate it!

We are in the final stages of production on a comprehensive history book of Dataaw Island entitled "No Ordinary Place." We hope to make it available in the fall.

Our outreach program is attracting interested groups from off-Island. This year we hosted groups from Osher Lifelong Learning Institute (OLLI), Beaufort Senior Leadership, Beaufort Porsche Club and Penn Center's Program for Academic and Cultural Enrichment (PACE) program, and of course, we continue to participate in the Camp Dataaw program.

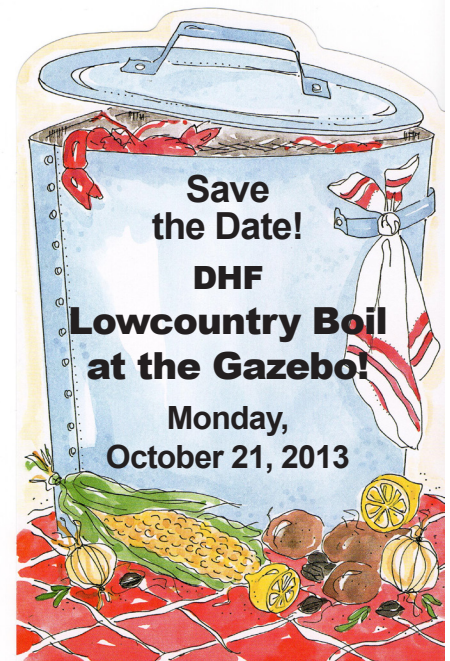
Have a wonderful spring and summer!



Visit our NEW website!

"A place to appreciate our past"

DataawHistory.org



Inside this newsletter

DHF Outreach Program (pages 2-3)

DHF's Annual Oyster Roast (page 3)

Delving into Dataaw's Past Defines the Present . . . and Directs our Future (pages 4-5)

DHF 2013 Officers, Board Committees Chairmen, Directors (page 5)

2013 DHF Members (pages 6-7)

Notes from the Board (page 8)

Special insert: the Heritage Walk and DHF Membership Form

DHF Outreach Program Increasing in Popularity

Senior Leadership Tours Sams Plantation Tabby Complex... JOHN COLGAN

On Wednesday, January 9, 33 participants in the Clemson-sponsored *Beaufort Senior Leadership Program* visited Dataw as part of the introductory Beaufort County History and Culture Class. The students gathered at the Welcome Center to view the historic artifacts in the display case and hear Joel Holden's fascinating "12,000 years of Dataw history in 20 minutes" talk. The class then visited the B.B. Sams Plantation Tabby Complex and was treated to a guided tour of our prized historic site by DHF volunteer docents, Jack Brown, Joel Holden and John Colgan. The afternoon concluded with a Social Mixer in the Cannery Library. Judging by comments made then and by formal critique later on, the students were very appreciative of the insight into the early history of life as it was lived in Beaufort. The Clemson Senior Leadership Program is a 16-week, in-depth immersion course into all aspects of Beaufort County life. The program, now in its 21st year, is designed for retired residents and newcomers to Beaufort County.



The 2013 Senior Leadership group along with docents John Colgan, Jack Brown and Joel Holden gathers outside the Cannery. DHF member Celeste Nalwasky participated in this year's program.

OLLI Dataw History & Ruins Tour — Another Hit! ... JOEL HOLDEN

Despite being twice rescheduled due to bad weather, including thunderstorms, our spring semester presentation of "HIS 205 — A Tour of the Dataw Ruins" was another hit. The class session began in the Welcome Center with Joel Holden presenting his "12,000 Years of Dataw Island History in 20 Minutes." The class then proceeded to the Sams Plantation Complex Tabby Ruins, where they divided into groups and toured the historic site led by docents Jane Griffith, John Colgan and Joel Holden. The final stop was the Cotton Dike former slave cemetery. The class evaluation forms submitted were 100% at the top evaluation an OLLI class can receive.



Touring Dataw's ruins has become a popular OLLI offering. The class fills quickly each semester and always receives rave reviews from participants. Docents Jane Griffith, John Colgan and Joel Holden are in this group photo.

A few of the written comments: "Wonderful tour of a well-kept historical site"; "Excellent, thank you"; "What a delightful adventure"; "I hope you do this again for others."

OLLI, the Osher Lifelong Learning Institute of USC Beaufort, provides quality, intellectually stimulating, non-credit, educational opportunities and experiences. Shortly after the Spring 2013 semester catalog was released, the "Dataw Ruins Tour" class capacity was filled and a large waiting list emerged. This popular class is already scheduled for October 21 in the 2013 Fall Semester. It should be noted that many of the class attendees had never seen Dataw before and were very impressed with our island — a good marketing tool.

Beaufort Academy Third Graders Learn about Dataw's History

... JOEL HOLDEN

Thanks to the efforts of DHF member Cissy Nichols, a "Focus Class" of Beaufort Academy's third graders came to Dataw on April 30. Joel Holden met the group along with their home room teacher, Brodi Dinkins, at the Welcome Center and, using his excellent pictorial review of Dataw preservation, presented a brief history of the Island. Joel then guided the group on a tour through the ruins. Cissy showed the group the artifacts on the second floor of the Club House before taking them to the Gazebo, where they enjoyed lunch. The students were enthusiastic about the experience and asked many questions about the ruins and history. They left with many stories to tell their parents and friends.

Thanks to Cissy Nichols and Joel Holden (both on the right), an enthusiastic group of 3rd graders from Beaufort Academy had fun while learning about Dataw's history.



(DHF Outreach Program continued on page 3)

15th Annual Oyster Roast — Sold Out AGAIN!

A big thank you to the Dataw community for their outstanding support of the DHF Oyster Roast held on March 18. The day began wet and dreary, but by 5 PM the sky cleared to a beautiful evening, and the thunderstorms held off until 11 PM!

220 members enjoyed May River oysters, gumbo, grilled chicken and assorted side dishes (prepared by Reeves Outdoor Catering) along with beer and wine. Dick Nalwasky’s band, “*Sometimes Later*,” added to the ambiance of the setting by the ruins. The evening ended with an array of delicious desserts served in the Cannery.

Wonderful raffle prizes were donated by Saltus River Grill, Grace and Glory Uptown, Rick Wightman, Jerry and Linda Hubbard, Dawn Schuster and Kathy Crowther. The lucky winners were: Judy Raynor, Charlotte Blamble, Gail Bartley, Carol Baxter, Rosemary Little and Denise Sullivan.

Co–chairs Dawn Schuster and Diane Roney especially thank the over 35 DHF volunteers who worked to make this major fund–raising event such a huge success.



Dataw’s Dick Nalwasky on the harmonica with the band “*Sometimes Later*.”



Dessert Chair Mary Ferguson in the Cannery at just one of the fabulous dessert tables.



Oyster Roast Co–Chairs Diane Roney and Dawn Schuster



DHF Historic Preservation Consultant Colin Brooker and his wife, Jane, were among the guests.



Raffle Chairs Becky McCann and Nancy Hahn selling tickets for the great raffle prizes.



DHF President John Colgan announcing the Raffle winners.

DHF Outreach Program
(continued from page 2)

Lowcountry Porsche Car Club Tours Sams Plantation Ruins

... JOHN COLGAN

On Saturday, May 18, thirty members of the Porsche Car Club of the Lowcountry visited Dataw for a tour of the B.B. Sams Plantation Tabby Complex. This tour was arranged for by DHF member Conard White. The group was greeted at the Welcome Center where they were shown a PowerPoint presentation on the rich history of Dataw Island. After that, the group was treated to a guided tour of the Ruins by DHF docents. With lots of history to chew on, the group adjourned to the Sweetgrass Restaurant to complete a pleasant day on Dataw.

Sams Family Members Tour the Ruins ... JOEL HOLDEN

A note to DHF from Dataw resident John Meyers noted that members of the Sams family would be here on Friday, May 3, 2013, and were very interested in touring the Sams plantations ruins and learning its history. Early that Friday evening, Joel Holden met with John Myers and his company at the historic ruins site and was introduced to John Bonum Sams, Jr. and his sister Julia Sams Holleman. Both are direct descendants of Berners Barnwell Sams (BB Sams).

John lives in Mount Pleasant, SC, and is a retired Lieutenant General, United States Air Force. Julia lives in Atlanta, Georgia. Joel provided a tour of the Sams Plantation Complex Tabby Ruins complete with a brief history of the Sams family. The tour ended in the Sams Family Cemetery where Joel showed John and Julia the final resting place of their great–great grandparents, Berners Barnwell Sams and Martha Fripp Edwards Sams, and of their great–great–great grandparents, William Sams and Elizabeth Hext Sams.

Julia had visited Dataw once before and briefly saw the ruins. John had stopped at the Gatehouse about 15 years ago and told the guards that he was a Sams and would like to see his ancestor’s home and cemetery. He was turned away at the Gatehouse — told that if he didn’t know a resident he couldn’t enter!

It was a great pleasure meeting additional members of the Sams family, and we will certainly keep them informed of our future activities.

Delving Into Dataw’s Past Defines the Present . . . and Directs Our Future . . . ANN CRAIGMILE

Most of us living on Dataw remember the first time we drove onto the Island and saw the Sams Plantation ruins. Little did I know that this sight would ignite such a passion for learning the history of the Island. Most amazing to me is that through the efforts of the DHF, new revelations about Dataw’s history continue to be uncovered. The process of piecing together information from artifacts, archives, articles and interviews is ongoing and exciting.

In the last DATELINE (April 2013), DHF president John Colgan wrote an interesting article that was initiated by a sherd of glass found by Reeve Court resident Rosa Lee. It turned out that Rosa had found a piece of Thom’s River punctuated pottery from 1500–500 BC when a large Indian village stood on the shores of the Morgan River extending from what is now Reeve Court over to Big Dataw Point.

John tells about the archaeological evidence that Native people have lived on Datha (now Dataw) for over 10,000 years! This is confirmed by the finding of a Clovis point, which is the oldest known projectile point in North America. It was used by Paleo-Indian hunters who crossed the land bridge from Asia over 12,000 years ago. The climate was cold, and these Indians hunted now extinct animals who roamed over much of the state of South Carolina. As the climate gradually warmed, the Indians adapted to their surroundings. During the Archaic Period (8,000 BC to 1,500 BC), these Indians lived in small nomadic groups which frequently moved in search of food. They lived along the eastern shore and the central sector of Datha Island.

John described how next came the Woodland Period Indians who lived throughout the southeast from 1,500 BC to 1,000 AD. They came to Datha as part of their seasonal pattern of food collection. They lived in small camps and gathered oysters, fished and hunted deer. Most archeological sites on Datha Island are associated with these Woodland Period Indians. They have found evidence of lean-tos and other temporary shelters, small middens of shells where oysters were processed, stone tools, shell beads and pottery shards.

The final period featured in John’s article was the Mississippian Indian Period from 1,000 AD to 1,600 AD. These Indians, influenced by cultures to the west, began to plant corn, beans and squash. Stamped pottery fragments from this era have been found on Datha.

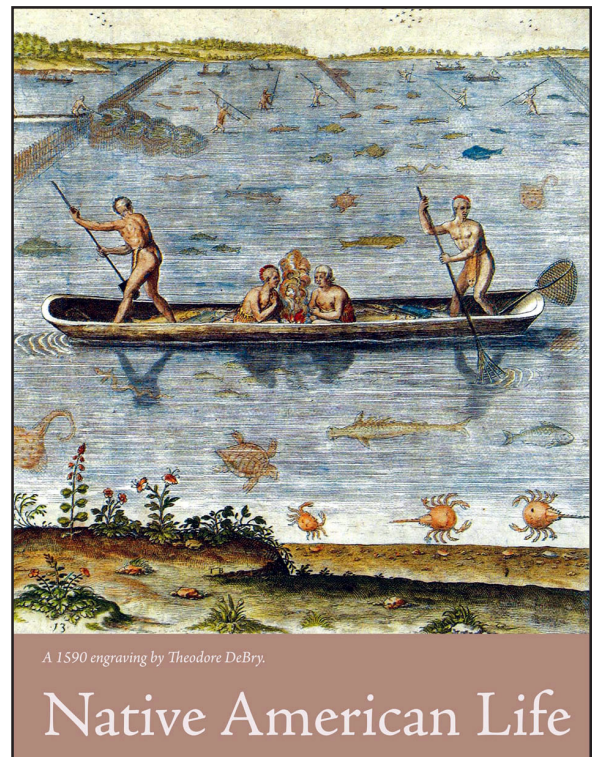
I now shift gears to another recent interesting read. This time it is the report which Heritage Planner and Historic Preservation Consultant Colin Brooker prepared for the DHF (*Stabilization, Conservation and Repairs at the Main William Sams House Site, Dataw Island*). It goes back to 1983 when the first contract for preservation work, negotiated by Alcoa with Murray Construction Inc., was begun.

Colin reports that on December 28, 1983, “I wrote to Phil LeRoy (Engineer, Alcoa) to report an unexpected structural problem at the East Wing of the Main House. While inspecting work on capping and installation of a window frame, it was found that the Wing’s east wall moved perceptively under my weight. The degree of movement, I wrote, is alarming and in my opinion the east end of the block is very close to failure and could collapse without warning under wind load or vibration.” As a precaution, all work was halted in the vicinity, mechanical equipment diverted and visitors excluded from the site.”

(Delving into Dataw’s Past continued on next page)



Pottery on display in the Welcome Center
 Top: pieces from Late Archaic Period
 Middle: from the Woodland Period
 Lower: from the Mississippian Period



A 1990 engraving by Theodore DeBry.

Native American Life

Part of the History Wall in the Welcome Center depicting Native American life on Dataw. Check it out!

Delving Into Dataw’s Past Defines the Present . . . and Directs Our Future *(continued from page 4)*

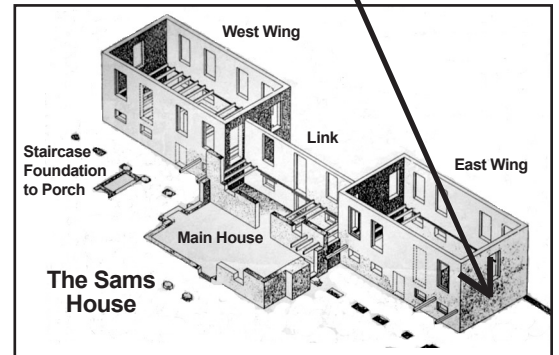
Colin describes how an armature was fabricated using heavy timbers, stainless steel rods and high tensile steel guy wires to provide bracing and to counteract structural movement. He wrote, “*The solution aimed to preserve all original tabby fabric and protect visitors from danger, but the stability was achieved at the expense of visual intrusion, since no attempt was made to camouflage new timbers or guy wires, elements foreign to the original build concept.*”

I learned new tidbits of information about Dataw’s vibrant past from each of these extremely different reads and was proud once again to be a part of all the good works now being done by the DHF to record and communicate Dataw’s interesting story (from prehistoric times to the present) and to preserve all those structures and artifacts that comprise the Island’s heritage.



Stabilized East Wing wall that nearly collapsed in 1983.

Arrow points from the picture of the wall to where it is located in the sketch.



DHF 2013

Officers, Board Committee Chairmen and Directors

Officers

- President: John Colgan
- Vice President: Marilyn Peck
- Treasurer: Ken Hirsch
- Recording Secretary: Barbara Titus
- Corresponding Secretary: Cece Megrue

Board Committees Chairmen

- Fund-raising Co-Chair: Dawn Schuster
- Fund-raising Co-Chair: Diane Roney
- Grounds Chair: Peter Pearks
- Historic Chair: Joel Holden
- Long-Range Planning Chair: Jack Brown
- Membership Co-Chair: Susan Converse
- Membership Co-Chair: Paula Campbell
- Public Relations Chair: Marilyn Peck
- Communications Chair: Cindy Schafer
- Ruins Preservation Chair: Bob Welborn

Directors At-Large

- Long-Range Planning: Ron Jacobs
- Historic, Finance: Joe Roney
- Volunteers: Joan Berra
- Executive Editor, Tabby Tattler: Ann Craigmile

Other

- Technical Consultant: Larry Rowland
- DIOA Representative: John Cashen

If you are interested in working with the DHF, contact any of the DHF Board members.



2013 DHF Board of Directors

L to R Front: Paula Campbell, Dawn Schuster, Cece Megrue, Ann Craigmile, Barbara Titus.
Back: Ken Hirsch, Joel Holden, Peter Pearks, Susan Converse, Diane Roney, Joe Roney, Marilyn Peck, John Colgan, Joan Berra, Perry Gesell.

Not present: Jack Brown, Cindy Schafer, Bob Welborn, Ron Jacobs.

TABBY TATTLER

Spring 2013

Tabby Tattler is a biannual publication of the Dataw Historic Foundation, Dataw Island, South Carolina.

- President: John Colgan (838-6748, jcolgan@embarqmail.com)
- Vice President: Marilyn Peck (838-2200, jayjaypeck@aol.com)
- Executive Editor: Ann Craigmile (838-3713, craigmile@embarqmail.com)
- Managing Editor: Perry Gesell (838-2995, perrygesell@gmail.com)
- Layout/Design: Cindy Schafer (838-7517, cindyschafer3@yahoo.com)

Dataw Historic Foundation
 Post Office Box 819, Beaufort, SC 29901

2013 Dataw Historic Foundation Members

Membership Categories

- Lifetime Members: Those whose lifetime contribution to the DHF is \$2,500 or more.
- Honorary Members: Limited to those with an ancestral connection to Dataw Island, This includes Sams family descendents and family descendents of other prior owners of Dataw Island.
- Friends of DHF: Those who have made a significant contribution to or have a special connection to DHF.
 - Benefactors (\$250)
 - Patrons (\$100)
 - Supporters (\$50)
 - Members (\$30)

LIFETIME MEMBERS

William & Rhetta Lowndes III*
Arthur R. Sams, Jr.

HONORARY MEMBERS

Jeanne Sams Aimar**
Charles & Virginia Aimar
Tom & Susan Sams Allen
Therese Colquhoun
Marvin & Cilla Dukas
Stephen & Janie Sams Hayes
Julia Sams Holleman
John & Jeanne Rogers
Larry & Margot Rowland **
John Bonum Sams, Jr.
Sara Parker Sams
T. Reeve & Betty Sams

FRIENDS OF DHF

Herb & Beryl Arnold
Sonny & Mary Bishop
Colin & Jane (Bruce) Brooker
Lois Cochrane
Marj Dehls
Jack & Martha Hamilton
Ian Hill***
Jerry & Linda Hubbard
James & Brenda Norris
Eric & Carol Poplin
Rick & Mary Wightman **

* also Benefactors

** also Patrons

*** also Supporters

**** also Members

Benefactors

Jackson & Mel Brown
Paulo & Arleen Cassutti
Gerald & Alice Chesser
David & Ann Craigmile
Phyllis Freeman
Joel & Ann Holden
James & Anne Kistler
William & Rhetta Lowndes III
John & Anita Mahoney
John & CeCe Megrue
Bob & Kathy Shields

Patrons

Jeanne Aimar
John & Martha Borcharding
Jack & Deborah Burke
Calvin & Paula Campbell
Doug & Katie Campbell
William & Marcia Coleman
Ron & Susan Converse
Cathy Crocker
Dean Cullison
Scribner & Ann Fauver
Larry & Billie Gaenzle
Charles & Winn Goodwin
Robert & Jane Griffith
Sterling Hall & Rosa Lee Vitez
Charles Hammel
Jim & Jan Herring
G. William & Gayle Hill
Kenneth & Sherry Hirsch
Gwyn & Joan Jordan
Robert & Susan Kinder
Jim & Marilyn Koerber
Terry & Beth Lurtz
Robert & Dianne McTier
Alan & Joanne Moses
John & Judy Myers
Francis & Joell Newton
Maureen O'Hara & David Easley
John & Bonnita Payne
Kenneth & Susan Pepper
Norman Phelps
George & Gail Roberts
Joseph & Diane Roney
Lawrence & Margot Rowland
Woody Rutter
Peter & Sherry Ruys
Bill & Beth Samuels
John & Cindy Schafer
Robert & Lucille Schiller
Andrew & Cathryn Sebor
Gerald Smith
Reginald D. & Ellie Smith
James & Lois Smithson
John E. & Mary Stefan
Maxwell & Louise Vallotton
Keith & Karen Waldrop
Rick & Mary Wightman
Al Wood

Supporters

Michael & Betty Adams
Skip & Judy Adams
R. B. & Barbara Anderson
John & Joan Berra
Douglas Bittner & Audrey McBratney
Tom & Elizabeth Blair
John & Vivian Boyle
Ann Brinkman

Bill & Carol Carpenter
John & Robin Colgan
John & Jan Copley
Paul & Mary Cowan
Jimmy & Bruce Crook
John & Rosemary Curcio
George & Peggy Dale
Robert & MJ Day
Patricia de Satnick
James & Kathy Douglas
John & Mary Ferguson
Joyce Foley
Joseph & MaryAnn Foutch
Stewart & Vicki Fraser
Sal & Melanie Gentile
Perry & Patty Gesell
Jan & Mem Gouza
Alex & Lee Greene
Jonathan & Janet Gregory
Frank & Nancy Grimaldi
Ronald & Jacqueline Guy
Joel & Merle Happe
Clifford & Grace Harrigan
Joan Hedley
Richard & Mary Heglin
Dean Hewitt
Ian Hill
Chipper & Peggy Hoff
Ray & Jo Hoge
David & Joyce Holdsworth
Ardith Holzmacher
George & Dorothy Ingram
Marion & Lenda Jablonski
George Jacobs
Ronald Jacobs & Donna Klein
Paul & Susan Jorgensen
Donald & Sue Kemper
Warren & Babs Kinsman
Chester & Susan Krisiewicz
Donald & Terry LaMont
Kenneth & Peggy Lantelme
Walter & Anna Lee
Edward & Ellen Like
Dave & Carol Luzzi
Tim & Lynn Maher
James & Sally Marks
Donn & Candace Massee
Ben & Judy McAuley
Patrick & Anne McCaffrey
Harrison & Rebecca McCann
W. Charles McCormack & Jane Thurston
Phillip & June Meeker
Walker & Mary Lee Merrill
Bob & Kay Morganroth
Eugene & Barbara Mowry, Jr.
Gabriel & Wendy Nagy
Norman & Cissy Nichols
Thomas Oliver & Beth Brya
William & Josie Paddock
Douglas & Jenifer Parker
Peter & Anna Pearks
Jonathan & Marilyn Peck

William & Lynn Peterson
Edward Pyles & Becky Koontz
Chuck & Judy Raynor
Charles & Collette Russell
Steve & Anne Schmitt
Larry & Lynn Scoville
George & Babs Shwab III
Kelson & Susan Slayman
Gregory & Rebecca Sprecher
Rolland & Catherine Stemland
Sally Timms
Barbara Titus
Bill & Linda Tomsik
Bruce & Gretchen Wager
Jeanne Wasson
John & Michele Weaber
Taylor & Robin Weeman
Larry & Sue Weidner

Members

Terry & Karen Ahern
Andy & Naomi Anderson
Bruce & Carol Anderson
Ron & Judy Anderson
Thomas & Carol Andrykovitz
Guy Apicella & Virginia Hall-Apicella
Charles & Sue Asselin
Ron & Elaine Bailey
Al & Janet Baker
Robert Baker Jr. & Eva Wustefeld
John & Ann Ballantyne
Ursula Barrett
Carol Baxter
George & Marianne Beck
Jim & Deborah Beck
Arthur & Joanne Bent
Ed & Pam Berg
Charles & Judith Bergin
Larry & Mary Bernard
Glenn & Susan Blackburn
Kenneth & Charlotte Blamble
William & Nancy Bonneville
William & Nanette Bopp
Frank & Barbara Boyle
Wayne & Gretchen Bretsch
Ralph & Laura Bricker
Cynthia Bryden
Tom & Gloria Budge
William & Gretchen Carroll
John & Josie Cashen
Roy & Joan Clelland
Aubrey & Jeanne Cochran
Colin & Carolyn Collins
Henry & Ann Cook
Ellen Corbett
James & Bernie Creegan
Roy & Carol Crocker
Allan & Kathy Crowther
Ken & Donna Cummings
Mary Beth Dale
James & Cece Danigelis
Gary & Sharon Davis
John & Carol De Stefano
Peter & Mary Dickerson
David & Pam Didier
Earl & Joan Dietz
Jean Digan
Robert Dooner
Lois Driscoll
Justice Duncan
Diana Eisenhart
Terry & Margot Eld
Bob & Gay Farmer

Arthur & Martha Fellows
Donald & Jane Flinn
James & Jeanne Foerstner
Robbie Foote
Nasser Forutan & Sandra Kehoe-Forutan
William & Nancy Fox
Philip & Betty Freer
George & Karen Gans
George & Lisa Gatesy
Norman & Julie George
Terry & Suzanne Giffen
Anne Gilbert
Bob & Joan Gilchrist
James & Ann Glynn
James & Babs Gourd
Jonathan & Jerlynn Greene
Connie Grover
Roberta Gunderson
Tom & Geri Hadley
Frank & Linda Hager
Paul & Nancy Hahn
Harvey & Norma Hammons, Jr
Connie Haskell
Phil & Shirley Hawley
Robert & Sally Haxby
Robert Hendricks & Becky Bennett
Walker & Mary Louise Henry
David & Susan Hertz
Charles & Leslie Holbrook
Jean Hollister
Clifford & Diane Hubbell III
Monte & Ruth Huebsch
John & Betty Huntley
Tom & Charlotte Hurley
Joel & Rita Ingegno
Paul & Joy Jacobs
Jesse & Jan Jones
Stanley & Joan Karmilovich
Timothy & Mary Gray Kelleher
Thomas & Susan Kelly
James & Ellen Kemp
Sharron Kendall
James & Catherine Kinsella
William & Jayne Krebs
Paul & Barbara Kyne
Richard & Sandy Lam
Rick & Louise Ledwith
Don & Dutchy Lewis
Rosemary Little
Linda Litton
Art & Carol Looney
Calvin & Ann Low
John & Ann MacFarland
Thomas & Billie Maier
Paul & Sue Mannheim
Bob & Lee Martin
George & Connie Mason
Peggy Mathis
James & Beth McCormock
Marvin & Charlotte Melton

Gardner & Norma Miller
Theodore & Pat Mitchell
Jerry Mobley & Emily Ettinger
Roy & Midge Moore
Bill & Carol Morgan
Arthur Morrow
John & Louise Moses
Nancy Myers
Dick & Celeste Nalwasky
Betty Lou Nordeen
Bob & Dorothy North
Douglass & Denise Ogden
Chuck Olney & Jan Beaudoin
Katharine Paulik
Peter & Barbara Payne
Jan Perry
Stephen & Cynthia Peskoe
John & Susanne Peterson
Michael & Joanna Petrie
Robert & Micki Pogachnick
Evan & Rosemary Reese
Norman & Doris Robertson
Rod & Marcia Rohrbaugh
Elisabeth Ruys
Robert & Nan Sadler
William & Dot Schaphorst
Lee & Jane Scher
Robin & Sarah Schilling
Lee & Eileen Schlorff
Drew & Joan Schrader
Alan & Yvonne Schuster
Mark & Brooke Schuster
Wesley & Dawn Schuster
William & Joan Schwartz
Al & Sheila Sears
Francois & Barbara Seguin
Anthony & Joan Silvestri
Magdelaine Smith
Tim & Pat Stolte
Michael & Denise Sullivan
William Tremittiere & William Love
Barry & Maddie Trevor
Mike & Neezy Valadez
Larry & Beverly Van Dillen
Margy Vanderbank
Franklin & Missie Walker
Julia Wall
Robert Walmsley
Roy & Cindy Walters
William & Roberta Weber
Robert & Kathy Welborn
Steve & Paula Wexler
John & Deborah Whalen
Conard & Nancy White
Barbara Wiefeldt
Jim & Anne Williams
Robert Wishart & Dale Martin
James & Peggy Wynne
David & Beverly Yoder

Our history makes us unique among residential communities, and our efforts to preserve and display that history are fun, educational and important to our future. Your support is important to us!

Not yet a member of DHF? Fill out the MEMBERSHIP FORM inserted in this newsletter. 2013 membership forms are also available in the Cannery or through the DHF website at DatawHistory.org. Return forms to Susan Converse at 488 B.B. Sams Drive.

Questions? Call Susan at 838-5581 or Paula Campbell at 838-5652.

Notes from the Board

Treasurer Ken Hirsch went over the current Board Operating Statement and reported that a donation to the DHF was received from the propane buyers group.

Membership Committee Co-Chairs Paula Campbell and Susan Converse reported that DHF has 320 members — 11 Benefactors, 47 Patrons, 91 Supporters and 171 members. Thanks to all who have supported the DHF and enabled ongoing ruins preservation. Special thanks go to Bill and Rhett Lowndes for their generous contribution to the DHF.

Grounds Committee Chair Peter Pearks noted that the trees in the ruins area have been pruned, four new signs are being made and bricks on the Heritage Walk now total 213. (*See insert page of this newsletter for article on the Heritage Walk.*) Peter needs four wheel barrels on July 9 for the DHF Camp Dataw activities. (Call him at 838-2506 if you have wheel barrows you can loan.)

Fund-raising Co-Chairs Dawn Schuster and Diane Roney were pleased to report that the Oyster Roast held on March 18th was a huge success with a profit of nearly \$5,000 (*See page 3 for Oyster Roast report.*) They have begun plans for the Lowcountry Boil to be held on October 21st at the Gazebo. Save the date!

Ruins Preservation Committee Chair Bob Welborn detailed plans for two major projects that were studied, debated, and approved by the DHF Board. Colin Broker and Rick Wightman were the consultants on the projects and will oversee their completion. The first project approved was a proposal for tabby repairs to the Dairy, William Sams House Site, and the Chapel. The west end and rear wall of the roofed portion of the Dairy needs some patching, filling, and surface stabilization. There also needs to be some minor repair around the dragon beam socket on the East Wing of the Main House. Additionally, the Chapel needs some minor repairs to the north wall due to damage from a fallen tree. This project was approved by the DHF Board based upon a detailed proposal by Colin Broker, at a cost of \$2,700. The work is to be completed within the next month.

The second project approved was a detailed plan for the long term stabilization of the excavated areas of the Blade House. This project will involve filling up the excavated areas within the Blade House with several tons of sand. The project was approved by the DHF Board at its April 1, 2013, meeting and will be completed after the tabby repairs described above. Total cost approved is \$3,125. These two projects will ensure the long term stability of the Sams home site, and will make it possible for future residents of Dataw Island to continue to enjoy the heritage of our lovely island.

There is an interesting new project involving the Kitchen Fireplace area. Archaeological investigations will be made to determine if there was an indigo processing vat at the rear of the fireplace and to discover if the fireplace predates the center section of the main house.

Public Relations Chair Marilyn Peck announced that the DHF portion of Camp Dataw will be on Tuesday, July 9. Activities are being arranged for two groups: 8:30-10:00 AM (6-9 year olds) and 1:30-3:00 PM (10-13 year olds). Lynn Maher will bake cookies and Cissy Nichols will be conducting a musical activity as part of the programs. Several volunteers are needed for this important event (Contact Marilyn at 838-2200 or jayjaypeck@aol.com if you are able to volunteer for Camp Dataw.)

Additional updates from Marilyn included: A Walking Tour map of the ruins will soon be available for anyone wishing to have a reference while independently walking through the ruins. New DHF notecards have been printed and will go on sale soon. The Dataw History Book, *No Ordinary Place*, is nearing completion.

Historic Chair Joel Holden has been busy with Outreach Tours of the ruins (see pages 2-3), updating the DHF website as well as assisting with the implementation of the new Dataw website, and finalizing an impressive DVD he has laboriously put together titled *27 Years of Preservation on Dataw Island*. Joel has also been instrumental in creating the history book of the Island.

Long-Range Planning Committee Chair Jack Brown reported that the committee comprised of Doug Campbell, Ron Jacobs, Paula Campbell and Larry Scoville is continuing to explore the framework for a possible new permanent facility to house Dataw's valuable artifacts and archives. They are also planning to update the DHF bylaws and consider new directions for the DHF's long-term strategic plan.

President John Colgan reported that there are four new Directors-at-Large on the DHF Board. They are Ron Jacobs, Long-Range Planning; Joe Roney, Historic and Finance; Joan Berra, Volunteers; and Ann Craigmile, Executive Editor of *Tabby Tattler*.

The DHF Board gives special thanks to **Martha and Jack Borcharding** for their vigilance in overseeing the Slave Cemetery which is next to their home on Cotton Dike Road. They make sure that it is well maintained and report to the DHF anything that may need special attention. This is a huge help to the DHF and to the Dataw community.

Help us teach visiting children about the rich and wonderful history of Dataw at Camp Dataw on July 9, 2013!

Contact Marilyn Peck if you can help. (See top right paragraph on this page for more information.)

